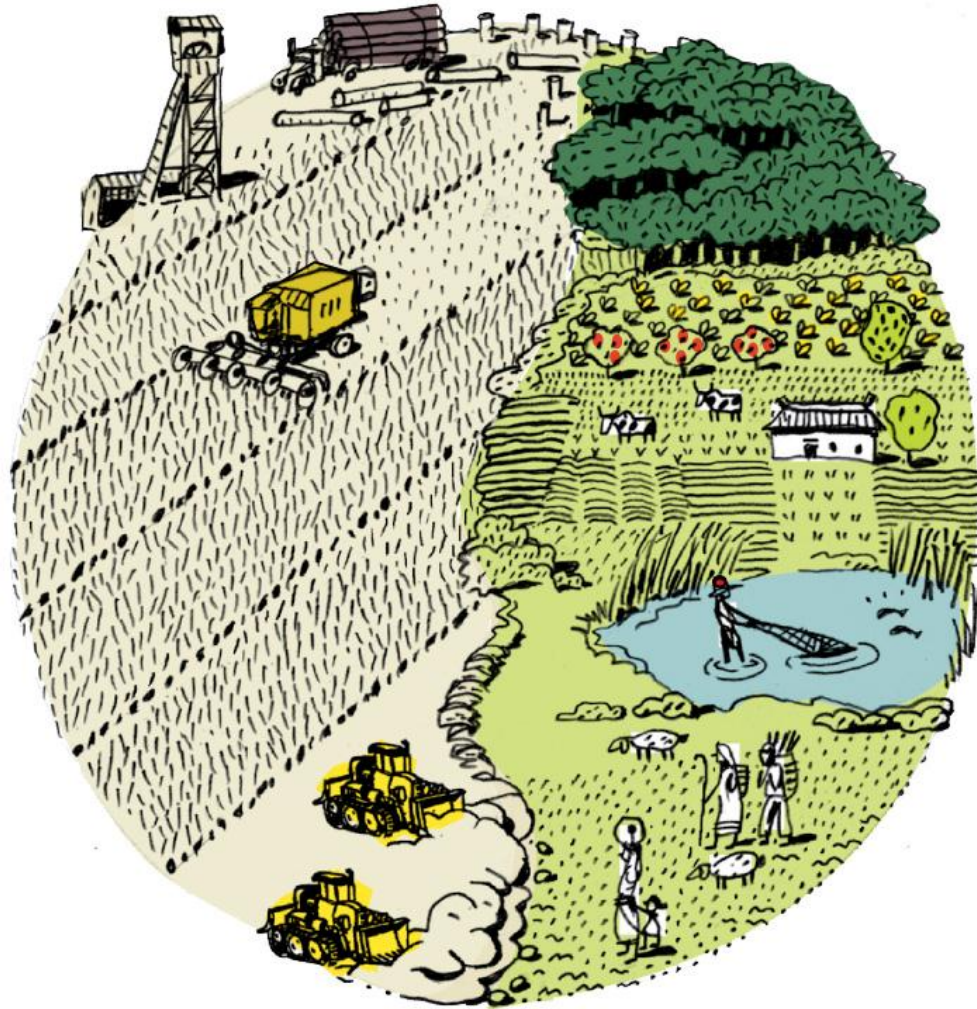


# Monitoring responsible governance of tenure: The Land Matrix



*FIG Council: Partnerships to implement the Voluntary Guidelines*

*7 May 2012, FAO, Rome*

# International Land Coalition:

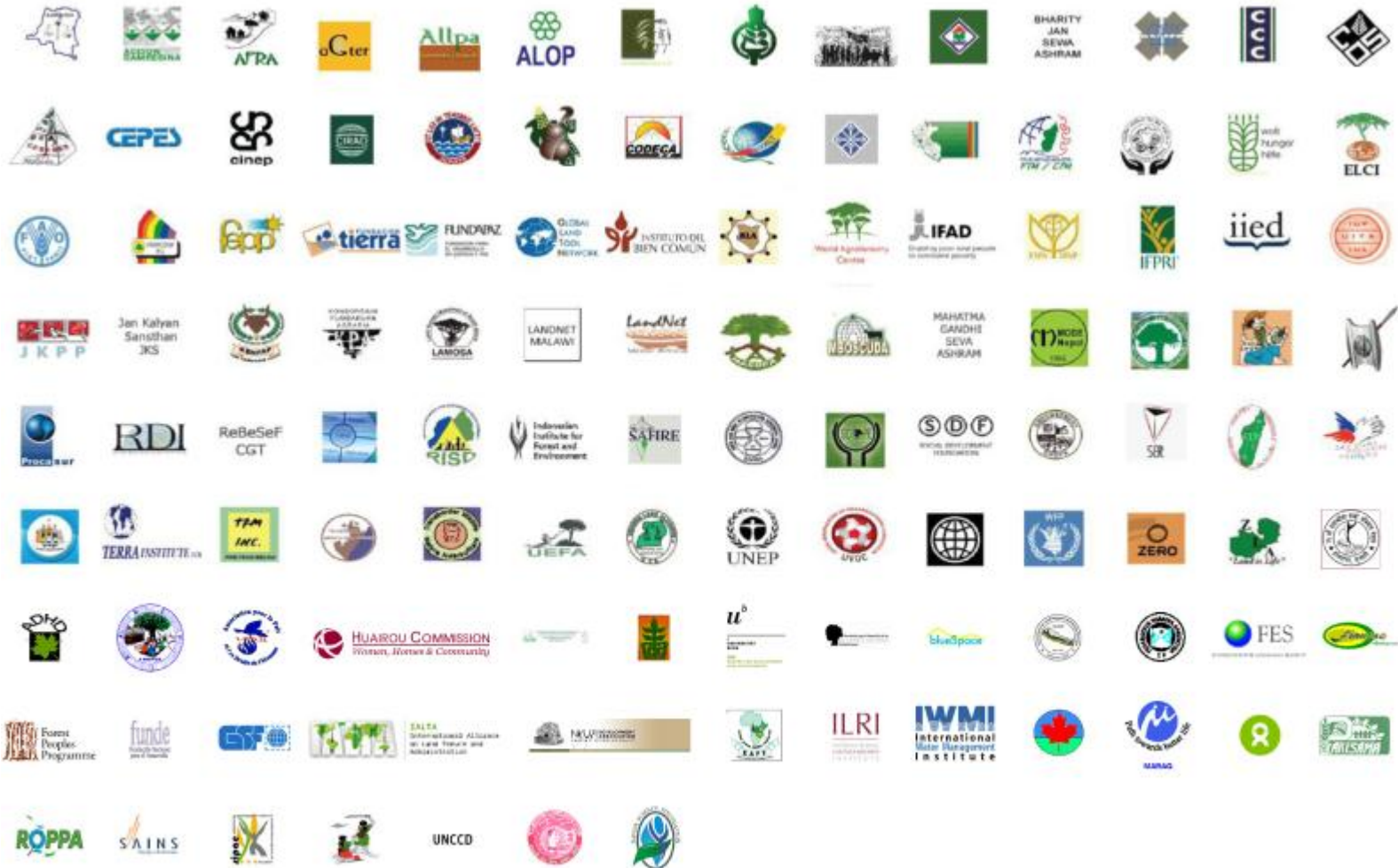
## A global alliance

- A global alliance to promote secure and equitable access to and control over land for women and men
- Vision: *Secure and equitable access to and control over land reduces poverty and contributes to identity, dignity and inclusion*
- Global Secretariat hosted at IFAD (Rome)
- Regional Nodes: Manila (Asia), Kigali (Africa), Lima (Latin America)
- Focus on policy dialogue, knowledge generation, capacity building and advocacy

transparency  
dialogue  
land concentration  
monitoring  
evidence  
equity  
free prior & informed consent



118 members, including intergovernmental organisations, farmers' organisations, research institutes, NGOs and CBOs



# ILC network and the VGs: setting norms for ‘people-centred’ land governance

1. **Strengthen pro-poor** governance
2. Promote people-centred land policies that **prioritise the interests of vulnerable groups**, whose livelihoods depend on land, including the landless, land-poor and rural workers
3. **Promote democratisation** of decision-making over land, inclusive of the full spectrum of land users
4. Recognise **diverse, flexible and plural tenure systems** and protect the commons
5. Promote **agrarian reform** and land distribution to avoid excessive land concentration and landlessness
6. Improve international **monitoring and reporting systems**



# ILC in support of VG implementation



1. Use ILC **global and regional meetings** to share information on the VGs
2. Integrate VGs systematically into the **National Engagement Strategies**
3. Use the **Land Portal**
4. Experience in building **multi-stakeholder platforms**
5. **Monitoring** land processes.

# Land Reporting Initiative (LRI)

Facilitate the gathering of evidence on access to land and tenure security, and ensure that evidence has an impact on policy formulation, implementation and reforms

- Enhance the effectiveness of **multi-stakeholder** land monitoring initiatives able to embrace, grassroots movements and citizen-led organisations, media, champions inside the government, researchers and practitioners
- Strengthen **capacity** of land-concerned actors to engage in advocacy and policy dialogue, influence the design and implementation of pro-poor land policies



# LRI components



**Land Indicators** An initiative to develop global land indicators on the democratic governance of land in line with regional and national initiatives



**Land Portal** Participatory online tool to aggregate and share land related information and facilitate networking among land-concerned individuals and organizations

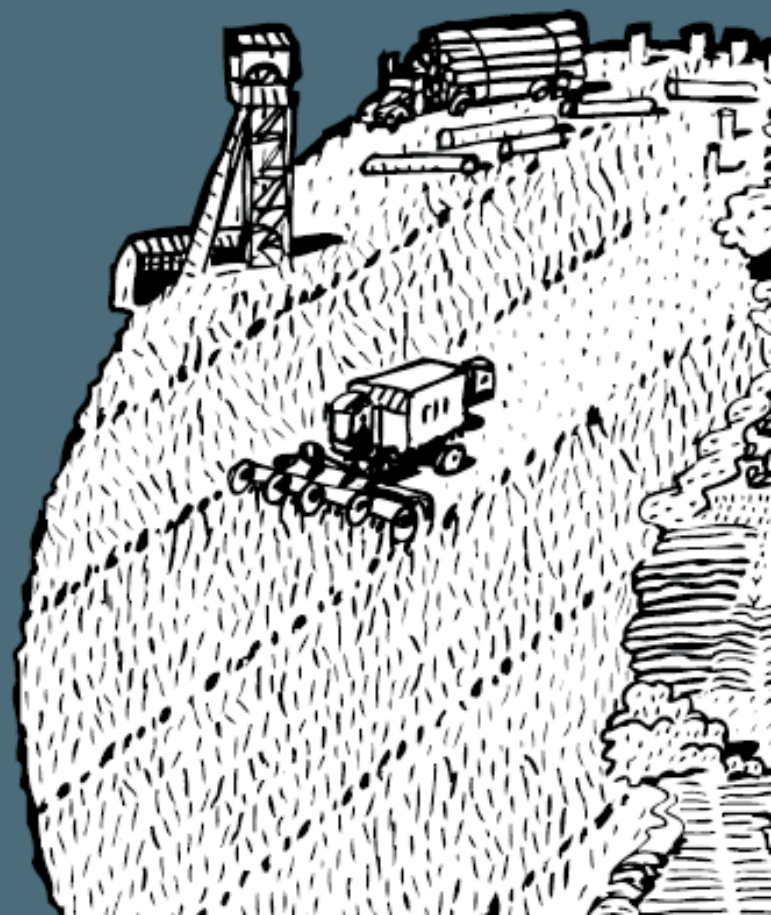
**Land Watch** Support to multi-stakeholder land monitoring initiatives on land issues; methodological support that focuses on enabling peer-to-peer learning within civil society



# The Observatory on Land Acquisitions Project

Platforms for transparency, participation and  
evidence-based decision making on land and  
investment.

<http://youtu.be/aQcmzPx6VC0>





[www.landportal.info/landmatrix](http://www.landportal.info/landmatrix)